

# **INSULBRICK ICF 250**

## **Manufacturers Specifications**

### **Insulbrick Notes**

N1 Minimum compressive strength of concrete used in walls construction shall be 32MPa @ 28days.

N2 For walls up to 3.4 metre height vertical reinforcement in wall shall be N12 (central) at maximum 5000mm (S) centres (u.n.o) and at the end span (0.85 x S), as well as wall ends, door & window jambs, and intersecting bracing walls.

N3 All bars shall be 600mm cogs, above bond beam bars.

N4 Top course of all external walls shall have 1-N12 longitudinal bar bond beam.  
(500mm minimum lap length)

N5 Top & bottom reinforcement for lintel shall be 500mm minimum pass opening, the top reinforcement shall be lapped at 500mm minimum with bond beam reinforcement (if applicable).

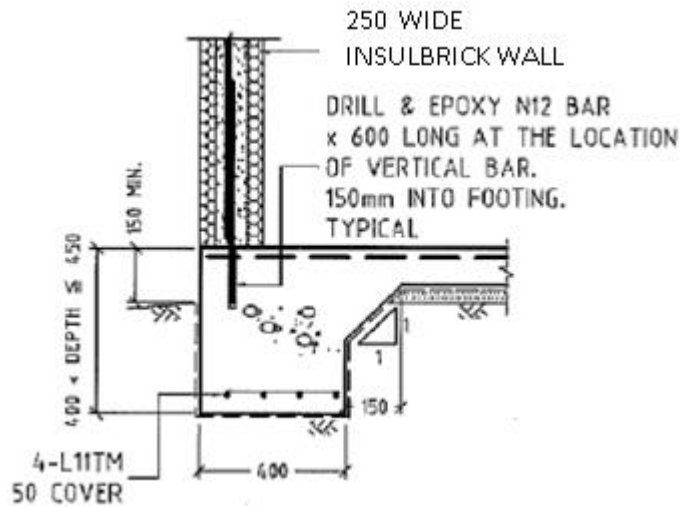
N6 Provide 1 – N12 longitudinal bar (500mm minimum lap length).

30mm top cover, to the following configuration of window sills (u.n.o),

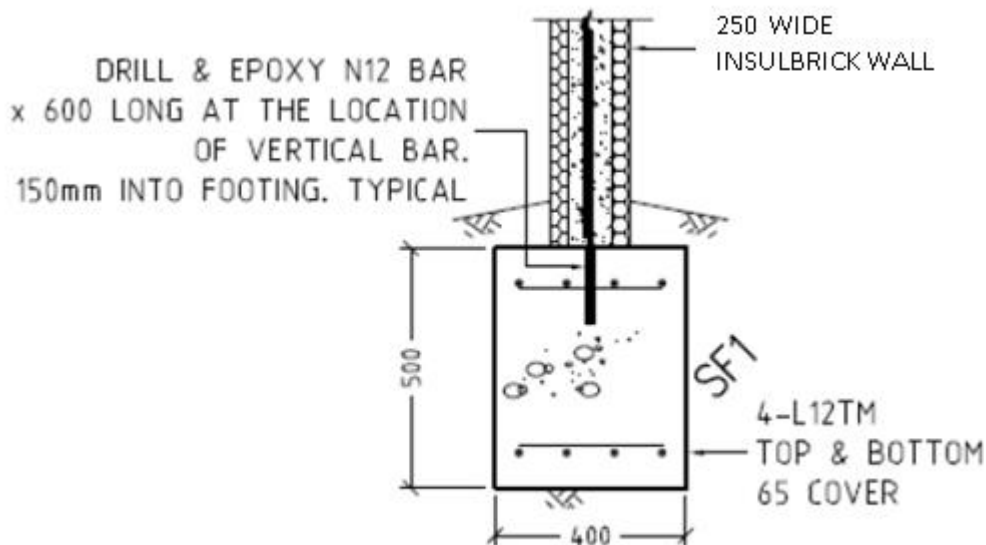
- The bottom of the opening is located at more than 1000mm height above Finish Floor Level, or
- The opening is more than 1500mm wide.

N7 Provide starter bars from footing at location of vertical bars.

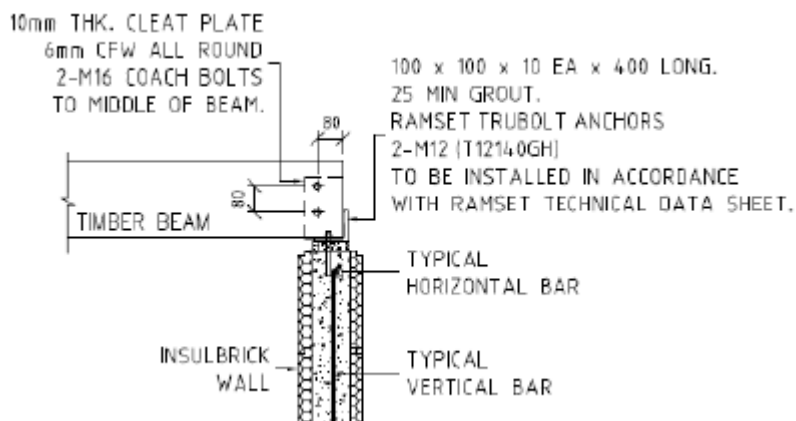
N8 Backing filling, where applicable, against reinforced Insulbrick walls shall not occur until wall has attained design strength (28 days).



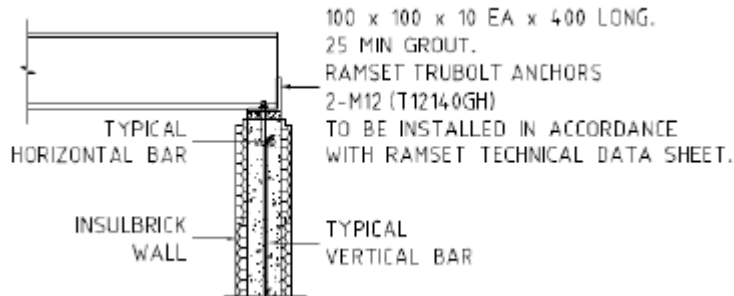
**TYPICAL INSULBRICK ICF 250 TO SLAB SECTION**



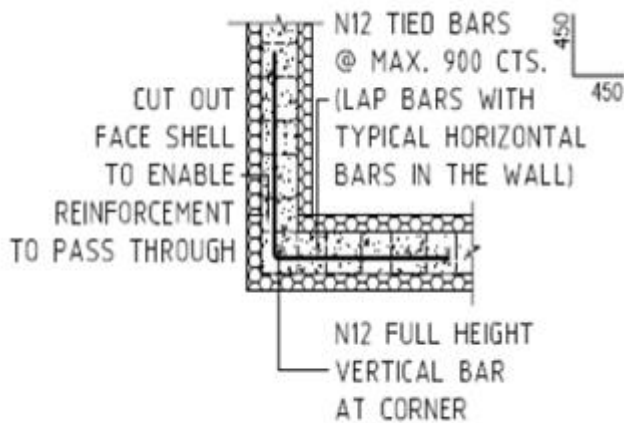
**TYPICAL STRIP FOOTING SF1**



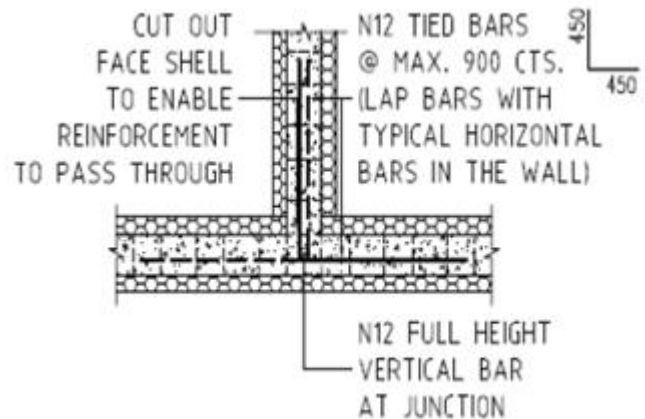
### TYPICAL TIMBER BEAM – INSULBRICK ICF 250 WALL DETAILS



### TYPICAL STEEL BEAM – INSULBRICK ICF 250 WALL DETAILS



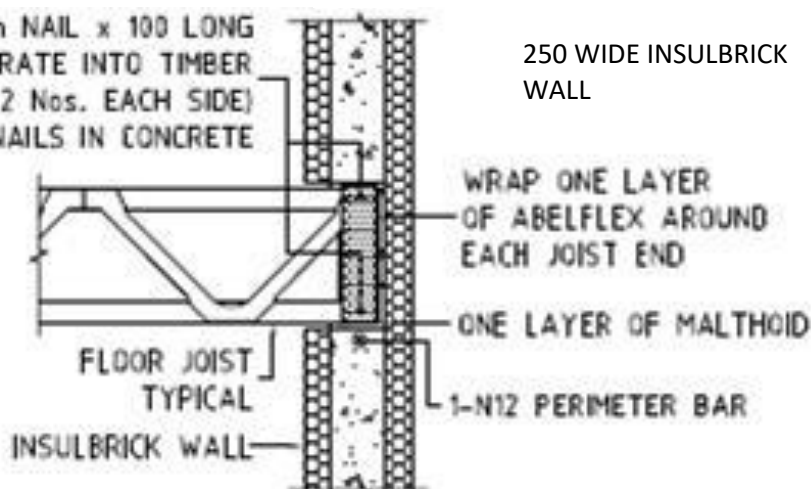
### TYPICAL WALL – CORNER DETAILS



### TYPICAL WALL – JUNCTION DETAILS

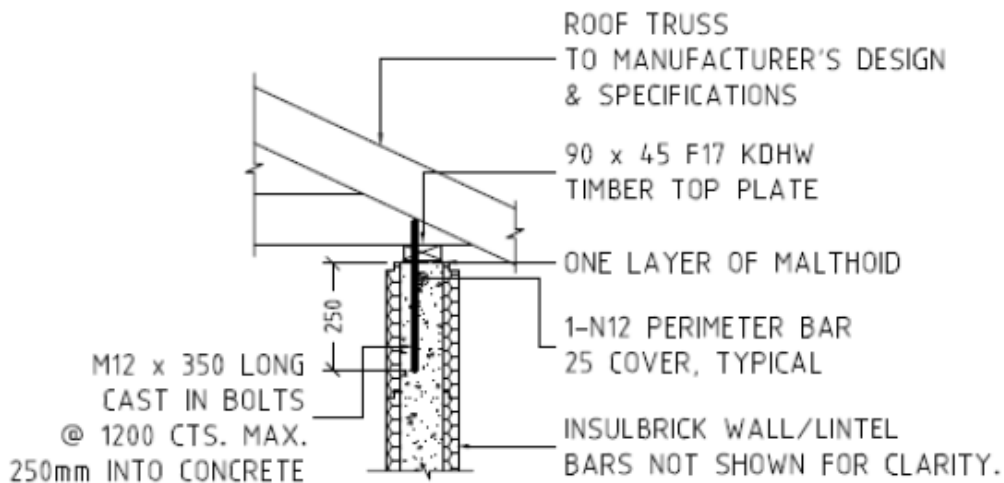
250

ADOPT Ø 3.75mm NAIL x 100 LONG  
 40mm PENETRATE INTO TIMBER  
 (2 Nos. EACH SIDE)  
 ENCASE NAILS IN CONCRETE

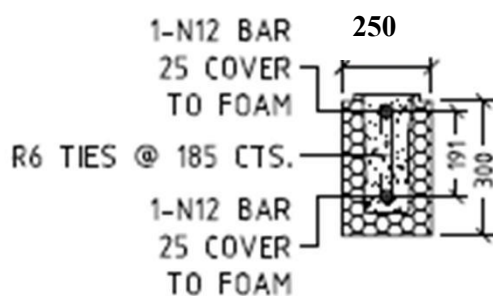


250 WIDE INSULBRICK  
 WALL

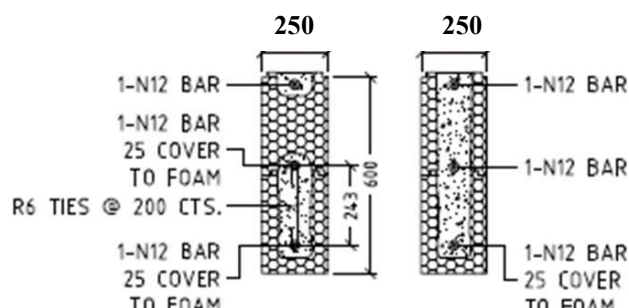
**TYPICAL POSI-STRUT or FLOOR JOIST TO INSULBRICK ICF 250 WALL**



**TYPICAL ROOF TIE-DOWN DETAIL**

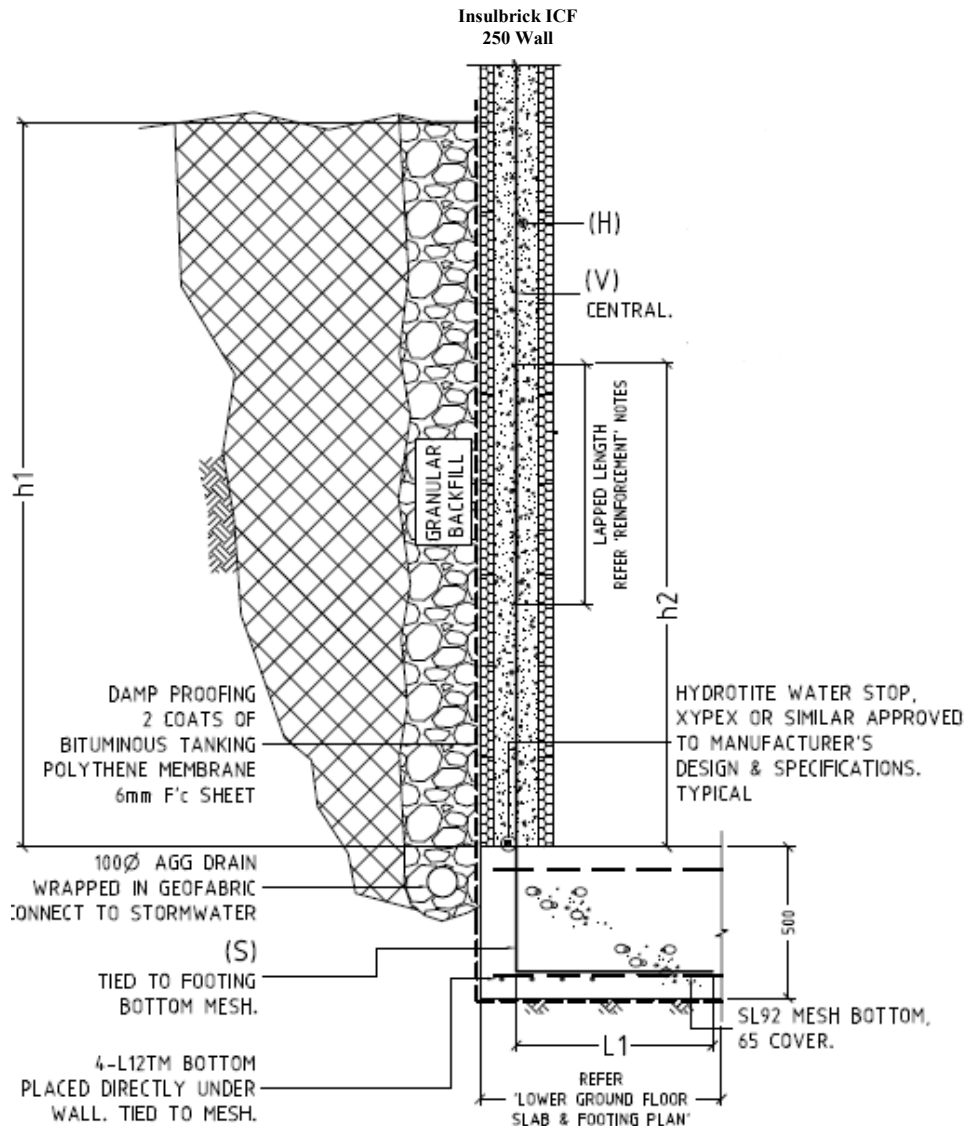


**STANDARD LINTEL DETAIL 300MM LENGTH – INSULBRICK ICF 250**

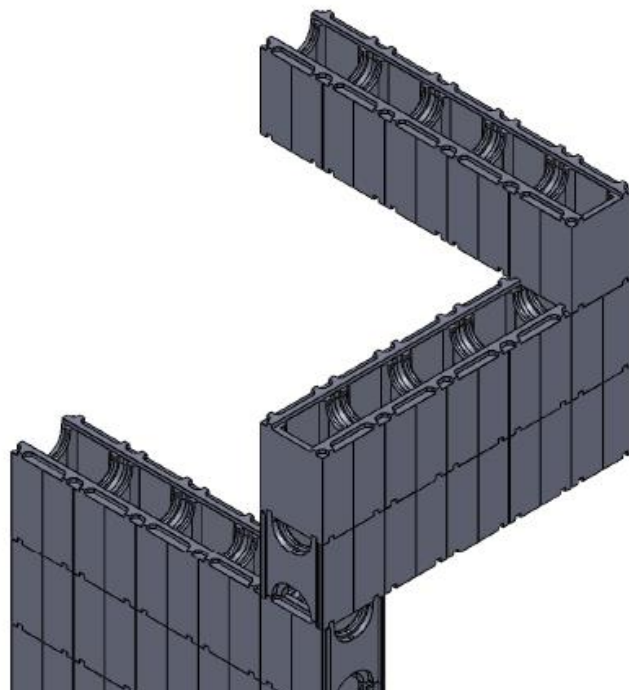
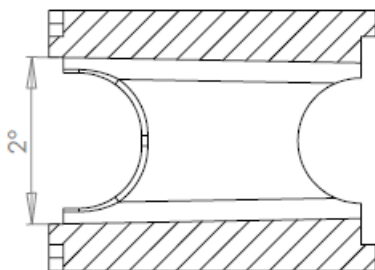
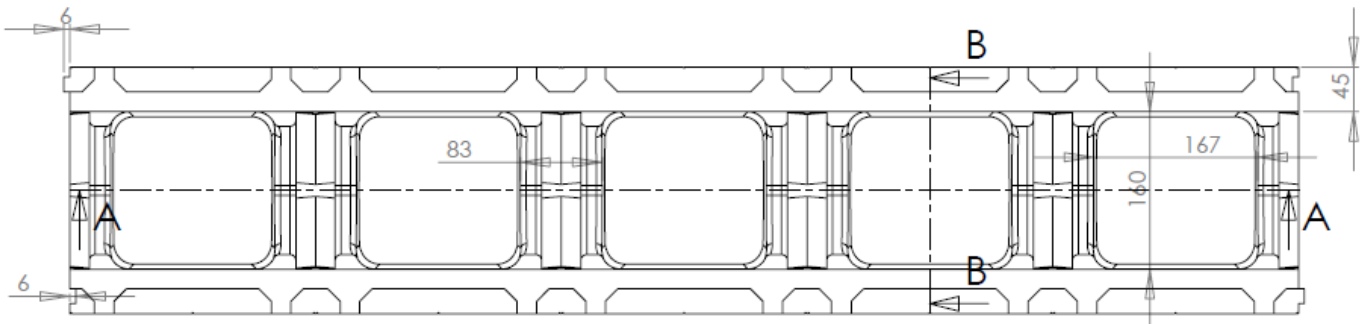
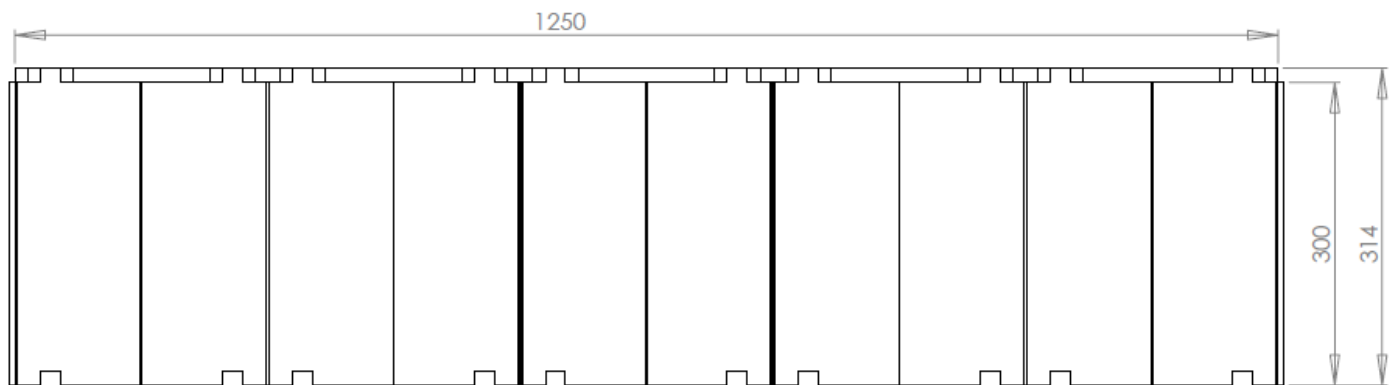


**STANDARD LINTEL DETAIL 600MM LENGTH – INSULBRICK ICF 250**  
**TYPICAL RETAINING WALL SECTION – INSULBRICK ICF 250**

**Note: Reinforcement shown will vary for each project depending on the design and local soil conditions**



250 INSULBRICK RETAINING WALL SPECIFICATIONS						
MAX. INCLINATION OF BACKFILL SURFACE = 10°.						
h	h1	V	H	S	h2	L1
WALL HEIGHT (mm)	MAX. RETAINING HEIGHT (mm)	VERTICAL BARS	HORIZONTAL BARS	STARTER BARS	(S) BARS CUT OFF HEIGHT (mm)	(S) BARS LENGTH (mm)
h ≤ 3000	h1 ≤ 1600	N12 BARS @ 480 CTS.	N12 BARS @ 300 CTS. TIED TO (V) BARS.	N12 BARS @ 240 CTS. LAPPED WITH (V) BARS.	1200	600



the insulating brick company Pty Ltd  
4/9 chapel street lynbrook vic 3975 australia  
abn 64 097 760 659 phone 1300 655 177  
[enquiries@insulbrick.com.au](mailto:enquiries@insulbrick.com.au) [www.insulbrick.com.au](http://www.insulbrick.com.au)

**insulbrick ICF** 